

# KOLLEKTION NATURA



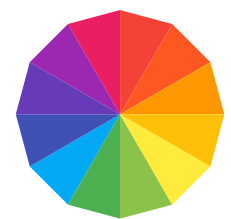
# KOLLEKTION **NATURA**



**ACCIAIO**  
630

GANZE LEDERHAUT  
**SEMIANILINLEDER**  
0,9 - 1,1 mm dick  
4,8 - 5,0 m<sup>2</sup> groß

PERFEKT FÜR  
**MÖBEL &  
POLSTER**



**102 FARBEN**

VERSANDFERTIG  
**IN 48 STUNDEN**



**JUST IN TIME**  
IMMER AB LAGER VERFÜGBAR  
DIREKT WELTWEIT LIEFERBAR



**BIANCO OTTICO**  
601



**LATTE**  
635



**GHIACCIO**  
666



**PELLE**  
664



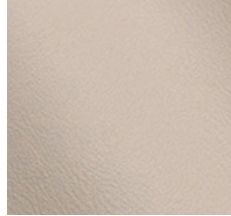
**MASTICE**  
676



**PANNA**  
603



**BEIGE**  
604



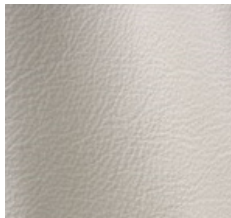
**MARMO**  
665



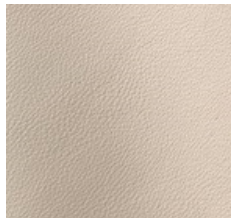
**STONE**  
629



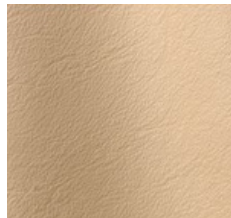
**GREY**  
626



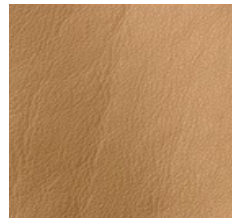
**GESSO**  
634



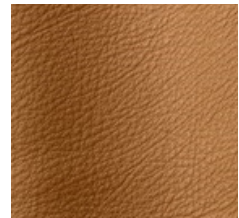
**AVORIO**  
636



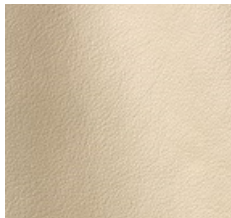
**CAFFELATTE**  
637



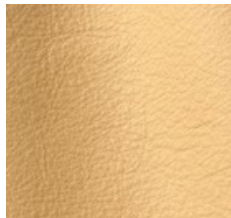
**WOOD**  
609



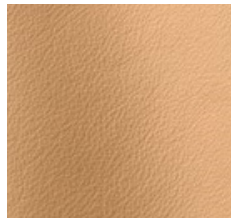
**NOCCIOLA**  
607



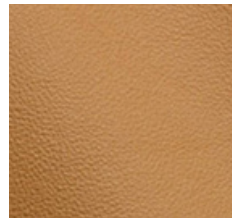
**VANIGLIA**  
602



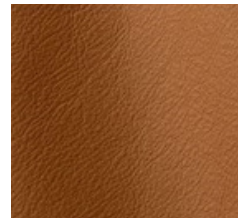
**PERGAMENA**  
654



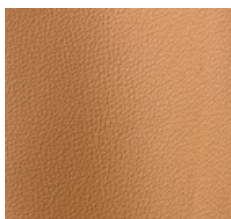
**CIPRIA**  
606



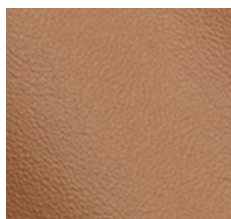
**MIEL**  
679



**FONDATINTA**  
662



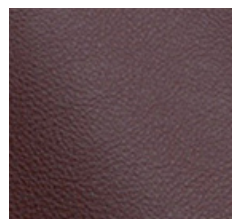
**SABBIA**  
628



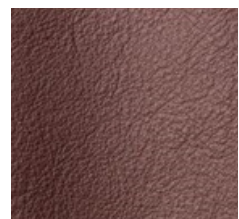
**NEW COGNAC**  
680



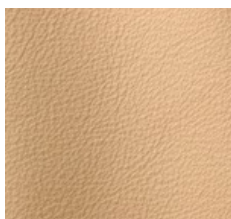
**MARRONE**  
608



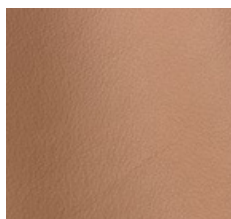
**MUSCAT**  
681



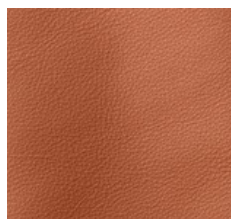
**MOGANO**  
610



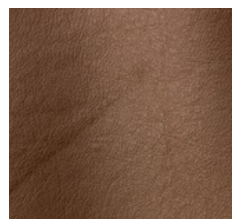
**CREMA**  
605



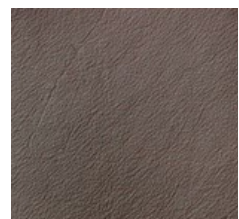
**SIENA**  
638



**COTTO**  
656



**MORETTO**  
646



**TESTA DI MORO**  
611



**GIALLINO**  
619



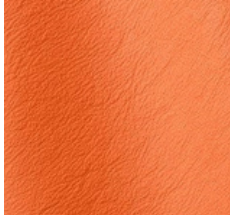
**ARANCIO**  
618



**ANTIC**  
616



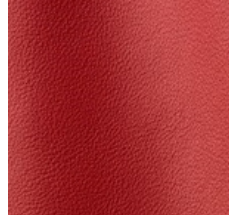
**MATTONE**  
613



**BEGONIA**  
617



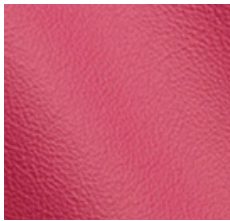
**ROSSO**  
614



**ROSSO ANTICO**  
657



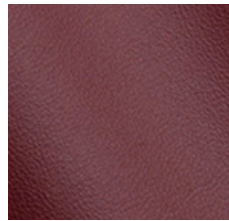
**BORDEAUX**  
615



**FUXIA**  
700



**AMARANTO**  
655



**EXTRABLOOD**  
704



**BURGUNDY**  
625



**CERISE**  
699



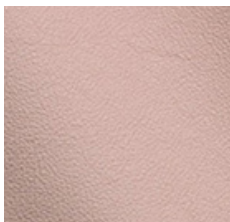
**ORCHID**  
698



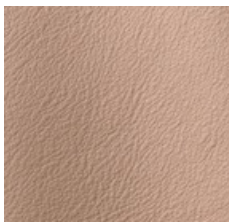
**VIOLA**  
633



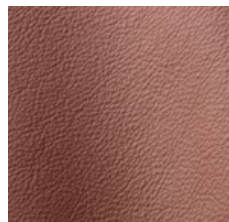
**PRUGNA**  
696



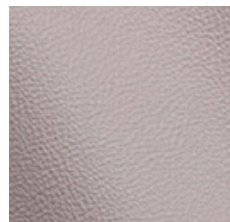
**CONFETTO**  
678



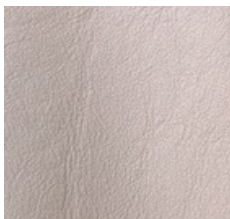
**TORTORA**  
659



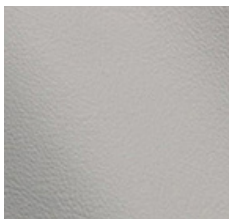
**ROSA ANTICO**  
651



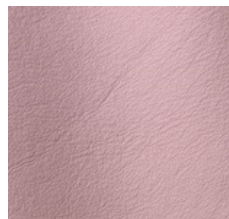
**GHOST**  
695



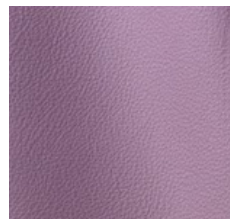
**CINDER**  
648



**FROZEN**  
668



**OMBRETTO**  
652



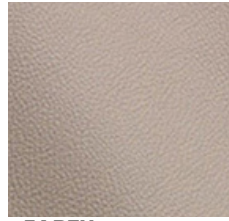
**LILLA**  
650



**CHALKY**  
663



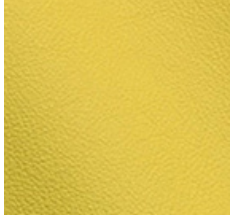
**GRIGIO PERLA**  
647



**EARTH**  
667



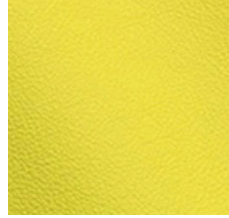
**ASFALTO**  
660



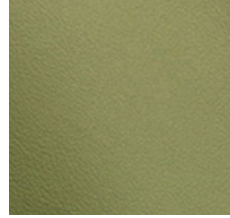
**SOUR**  
683



**GIALLO**  
620



**NEW CELERY**  
684



**ALOE**  
685



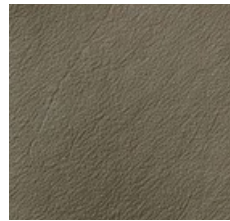
**SMOKE**  
639



**GREEN**  
631



**VERDE**  
621



**VERDONE**  
632



**MASCARA**  
640



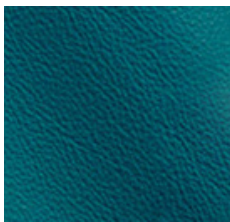
**OCTANE**  
674



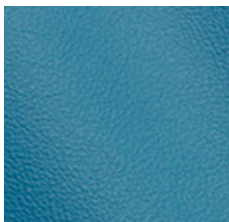
**ABETE**  
686



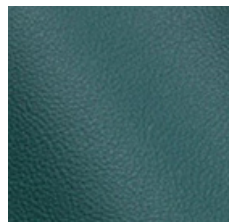
**FORESTA**  
658



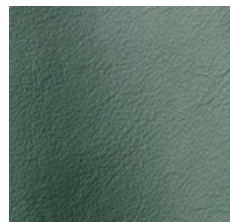
**MIDNIGHT**  
691



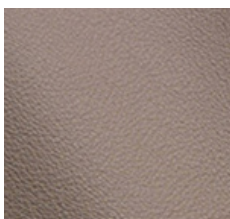
**CORVETTE**  
690



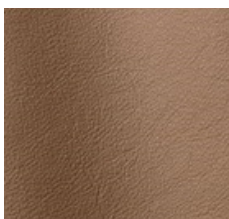
**COLVERT**  
692



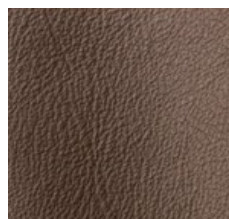
**PINO**  
653



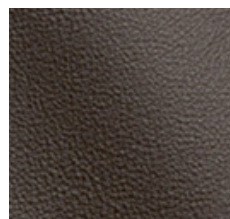
**MALT**  
677



**FANGO**  
627



**CASTAGNA**  
612



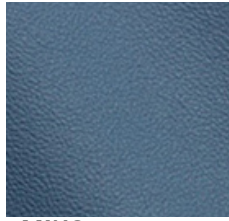
**COFFEE**  
682



**IRIS**  
673



**LAVANDA**  
689



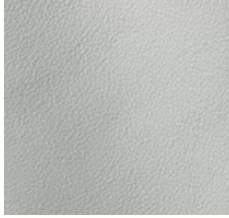
**MING**  
703



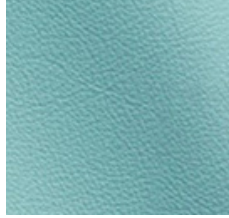
**NOTTE**  
644



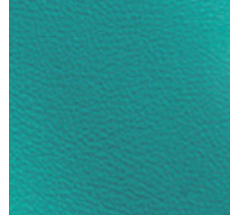
**CIELO**  
649



**LOTUS**  
641



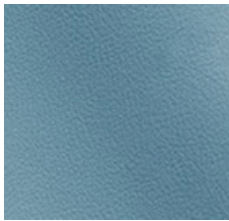
**AQUAMARINA**  
693



**MODERN BLUE**  
694



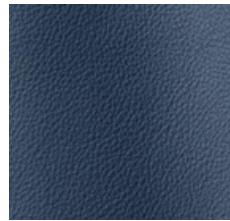
**SKY**  
687



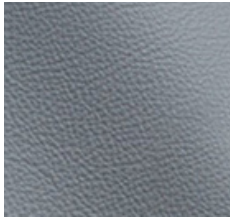
**PIOMBO**  
688



**AVIO**  
643



**AZZURRO**  
624



**MISTY**  
672



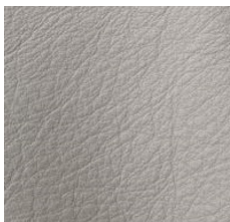
**PERSIA**  
697



**ELECTRO**  
701



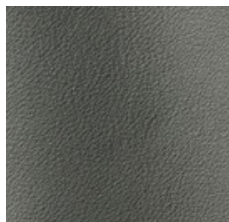
**DARK BLUE**  
702



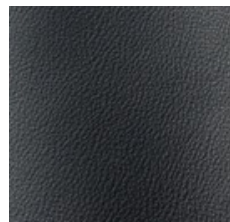
**ACCIAIO**  
630



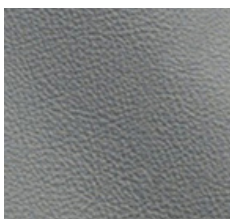
**CENERE**  
669



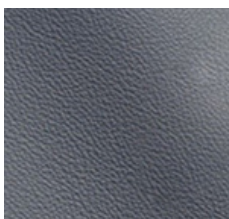
**GRIGIO**  
623



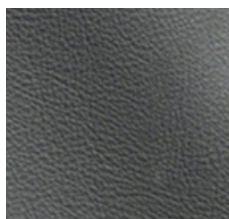
**ANTRACITE**  
645



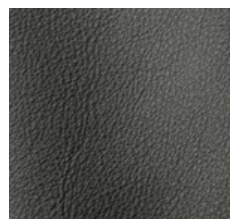
**INOX**  
671



**HIGHWAY**  
670



**NEW GREY**  
675



**NERO**  
622



## Natura Kollektion



Möbel &  
Polster



Schuhe



Kleidung



Täscherei



Automobil



Flugzeug &  
Boot

### Prüfverfahren & Ergebnisse Tests & Results

Farbechtheit, Xenon ARC-Labortest Color fastness to artificial light Xenon arc	gemäß / according to DIN EN ISO 105 B02	> = 5 (Blauskala / Blue Scale)
Dauerbiegefestigkeit Flexing endurance	gemäß / according to DIN EN ISO 5402	> 50.000 (Zyklen / Cycles)
Abriebfestigkeit nach Veslic Colour fastness to rubbing	gemäß / according to DIN EN ISO 11640	
Trocken - Dry 500 Z		> = 4 (ISO 105 A03)
Nass - Wet 250 Z		> = 3/4 (ISO 105 A03)
Abriebfestigkeit mit alkalischem Schweiß Color fastness to sweat alkaline solution	gemäß / according to DIN EN ISO 11641 pH8	
Schweiß - Sweat 80 Z		> = 3/4
Haftung der Zurichtung Finish adhesion	gemäß / according to DIN EN ISO 11644	> = 2,5 (N/cm)
Bestimmung des pH-Werts Determination of pH	gemäß / according to DIN EN ISO 4045	> = 3,5 (pH)
Differenzindex (nur für pH < 4) Difference figure (only for pH < 4)		< = 0,7
Weiterreißfestigkeit Tear strength - Single edge tear	gemäß / according to DIN EN ISO 3377-1	> = 20 (N)

Hochwertiges chromgegerbtes Semianilinleder aus Bullenrohware, durchgefärbt, wachsig weicher Griff und halbmatte Optik; Finish mit Wachsen und Harzen, Schutzschicht durch leichte Pigmentierung; ideal geeignet für Möbel & Polster; Rohware aus Europa, gegerbt in Italien; Stärke: 0,9 - 1,1 mm; Größe der durchschnittlichen Haut: 4,8 - 5,0 m<sup>2</sup>; 102 Farben;

Premium chrome tanned semianiline bull leather, through dyed with waxy soft touch and semi matt look; finished with resins, protective top coat through pigmentation; perfect for furniture & upholstery; hide originating from Europe, tanned in Italy; thickness: 0.9 - 1.1 mm; size of average hide: 4.8 - 5.0 m<sup>2</sup>; 102 colors;