

KOLLEKTION
NAPPA SUPERIOR



VERSANDFERTIG
IN 48 STUNDEN



LAMB
MS130040



OYSTER
MS170043



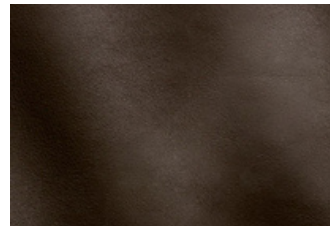
MOUTON
MS150077



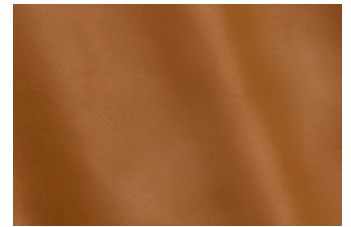
ROCK
MS430017



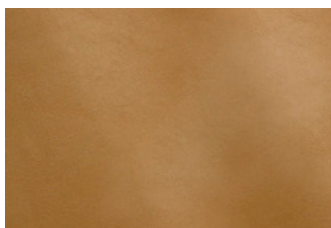
EARTH
MS190067



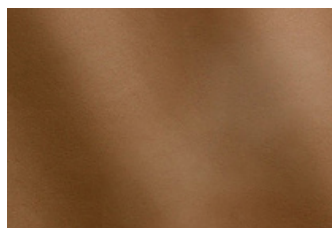
CARIBOU
MS430049



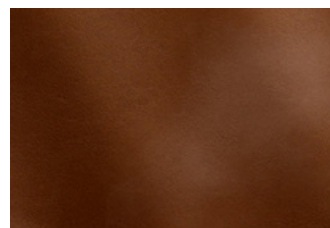
DONUT
MS280212



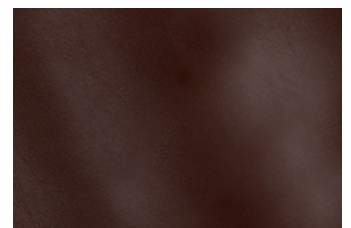
CHAMPAGNE
MS150094



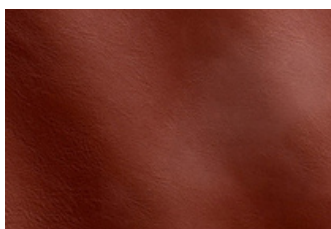
CAPPUCCINO
MS180083



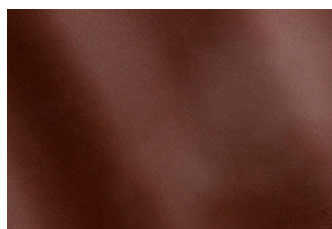
CANYON
MS620049



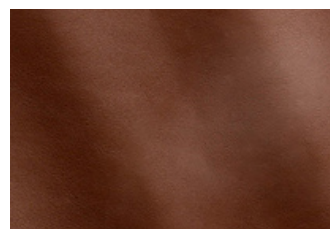
AUBURN
MS650232



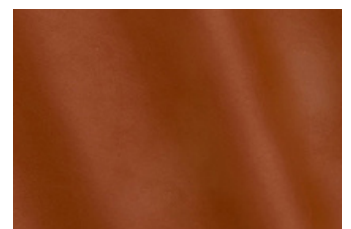
REDSKIN
MS280085



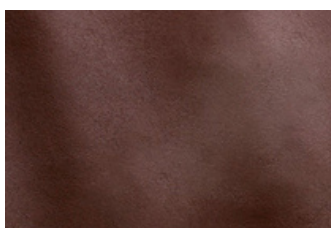
WOODY
MS650069



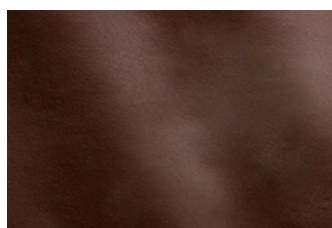
LION
MS640077



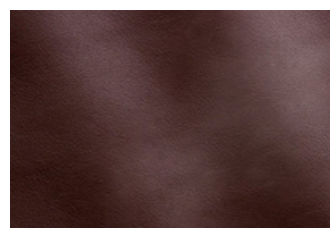
SQUASH
MS280251



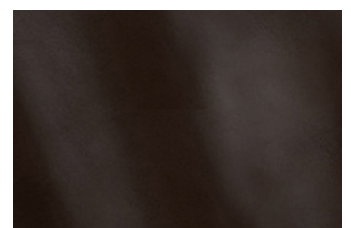
PRALINE
MS660020



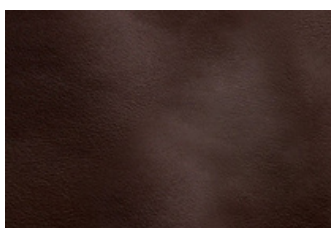
DATE
MS650077



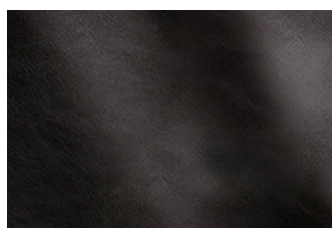
SEQUOIA
MS650124



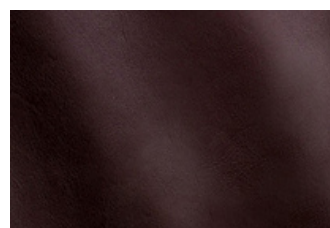
COFFEE
MS650124



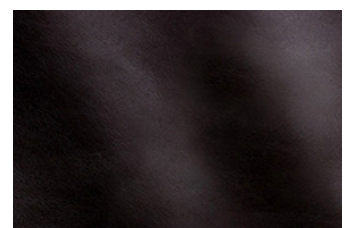
TABACCO
MS670105



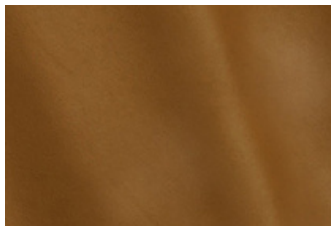
EBONY
MS680093



WINE
MS380067



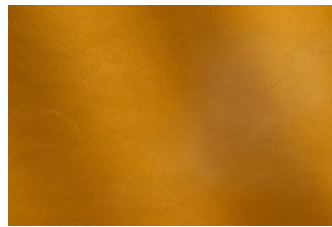
BORDEAUX
MS380015



KAYAK
MS240064



CANARY
MS210028

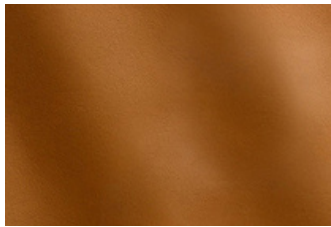


SOLEIL
MS240012

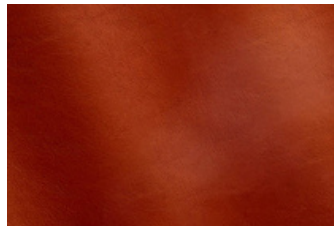
**HALBE LEDERHAUT
RINDSNAPPA**

1,1 - 1,3 mm dick
2,4-2,7 m² groß

PERFEKT FÜR
**LEDERWAREN,
SCHUHE &
BEKLEIDUNG**



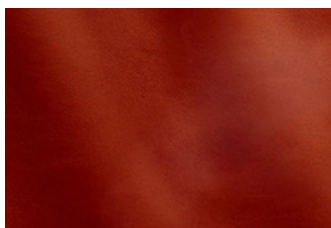
MAIZE
MS240004



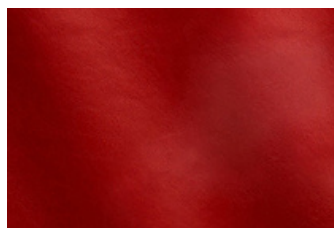
MANGO
MS280041



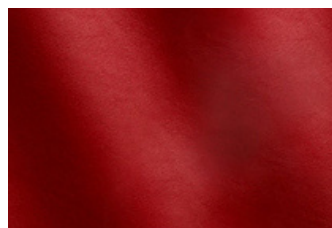
LILIUM
MS280069



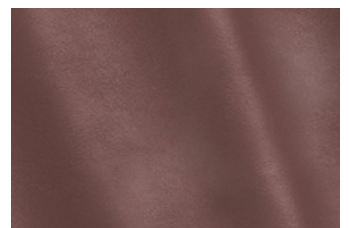
MASAI
MS640078



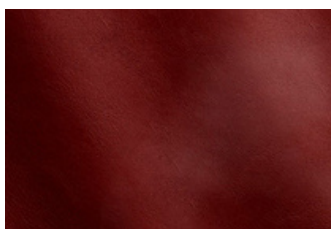
PARROT
MS340042



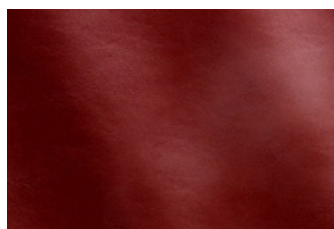
SANTA CLAUS
MS340047



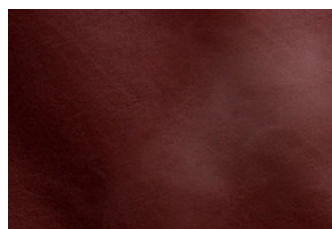
ROSEATE
MS310368



SCARLET
MS340103



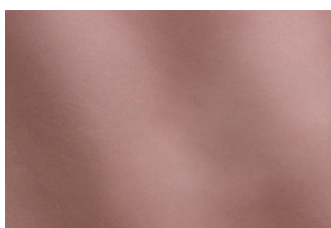
PHONEBOX
MS350057



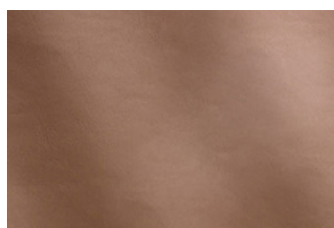
CREMISI
MS360048



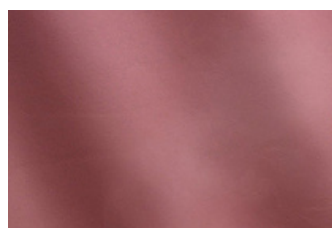
CERISE
MS360061



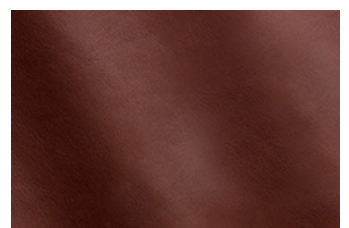
ROSA
MS310101



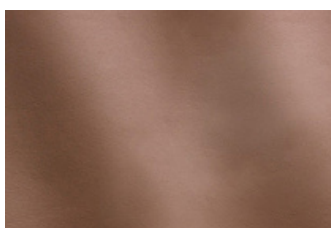
NUDE
MS310185



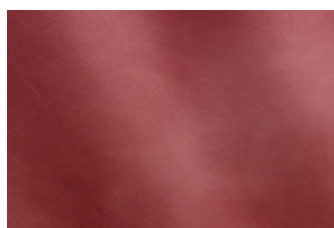
KISS
MS320040



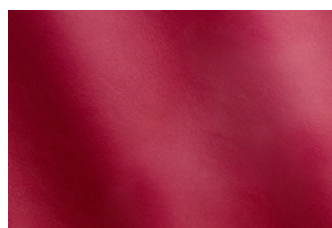
BROWNROSE
MS310162



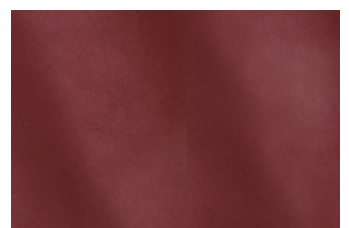
BLUSH PINK
MS310124



GUM
MS320032



PASSION
MS320019



PUNCH
320291



AZURE
MS730011



ARCTIC
MS720043



SANTORINI
MS720041



NIMBUS
MS700020



AQUATIC
MS710018



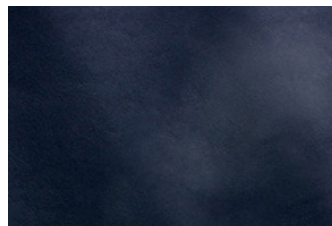
TURQUOISE
MS720036



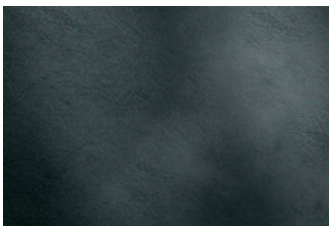
REEF
MS740066



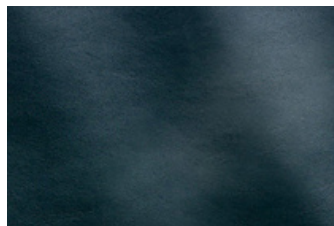
OCTANE
MS740050



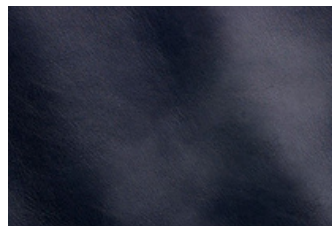
COSMO
MS760063



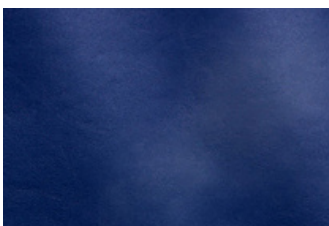
JEANS
MS770032



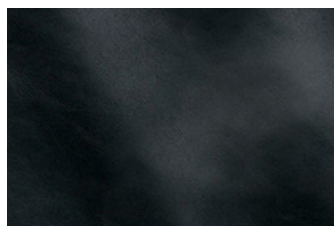
OCEANIA
MS740020



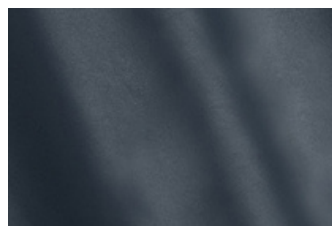
FLAG
MS770010



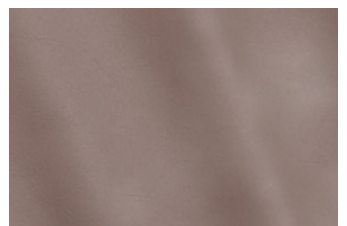
DENIM
MS760022



DEEP
MS780027



MING
MS760029



PERLA
MS820107



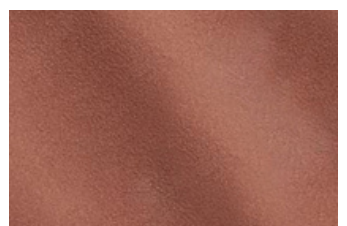
COLVERT
MS450053



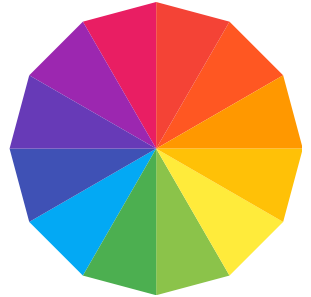
MAUVE
MS750016



LASER
MS310037



COQUILLE
MS310227



**GROSSES
FARBSPEKTRUM
MIT 90 FARBEN**



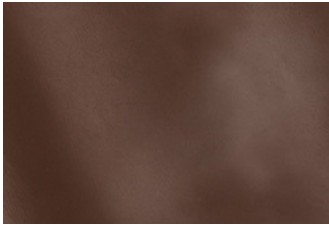
ANISE
MS410026



LIME
MS440015



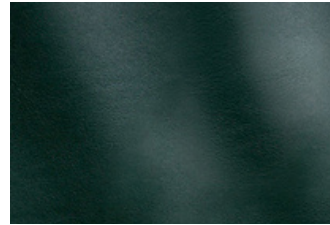
GREEN RAY
MS410040



MALT
MS190372



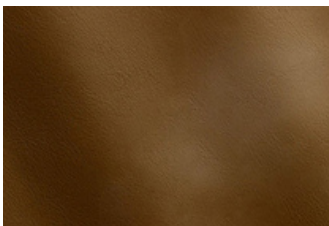
BIRCH
MS450015



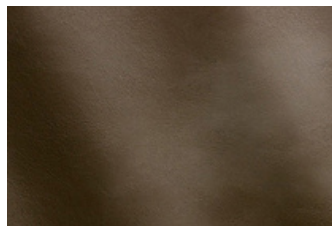
SERPENTINE
MS450021



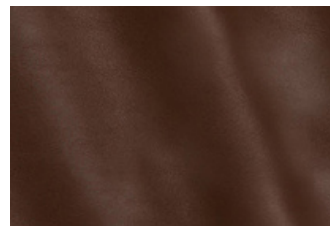
PIXIE
MS480003



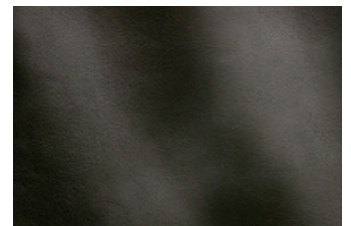
YETI
MS430015



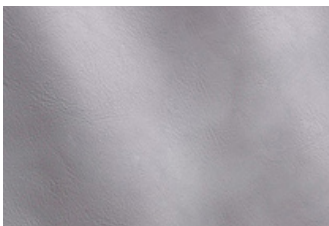
TRUFFLE
MS460013



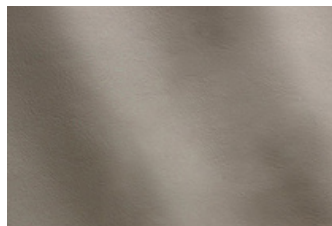
PASTRY
MS610034



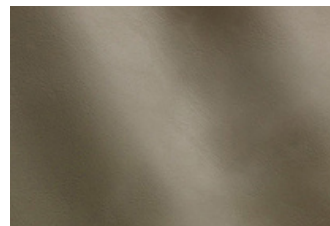
LODEN
MS490004



WHITE
MS100001

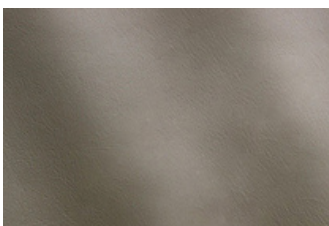


OFF WHITE
MS100059

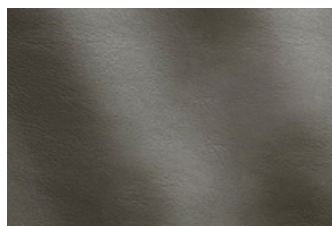


FROST
MS120056

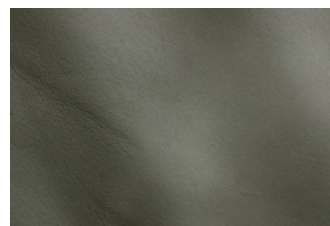

JUST IN TIME
IMMER AB LAGER
VERFÜGBAR
DIREKT WELTWEIT LIEFERBAR



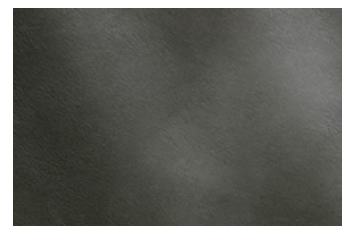
PLASTER
MS820043



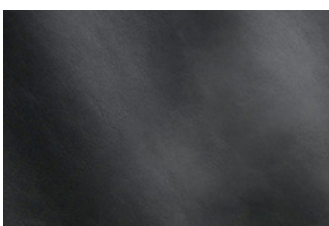
GRAPHITE
MS820025



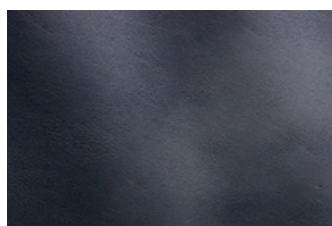
TUNDRA
MS840007



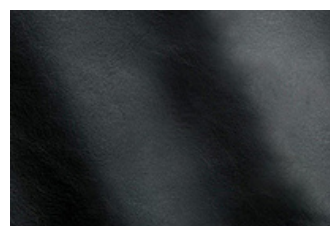
SCHIST
MS860019



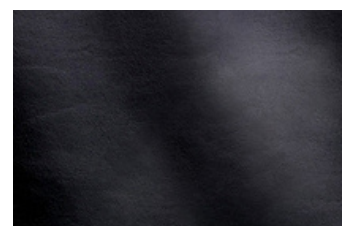
BRAIN
MS870038



COOK
MS860018



SHARK
MS860012



BLACK
MS999001

Nappa Superior Kollektion



Möbel &
Polster



Schuhe



Kleidung



Täschnerie



Automobil



Flugzeug &
Boot

Prüfverfahren & Ergebnisse Tests & Results

Lichtechtheit unter künstlichem Licht
(16.000 kJ/m²)
Color fastness to artificial light exposition
energy 16,000 kJ/m²

gemäß / according to
DIN EN ISO 105 B02 (Met.5)

> = 3/4 (Grey Scale / Blue Scale)

Dauerbiegefestigkeit
Flexing endurance

gemäß / according to
DIN EN ISO 5402

> 10.000 (Zyklen / Cycles)

Abriebfestigkeit
Colour fastness to rubbing

gemäß / according to
DIN EN ISO 11640

Trocken - Dry 100 Z
Nass - Wet 20 Z

> = 3/4 (Grey Scale / Blue Scale)
> = 3 (Grey Scale / Blue Scale)

Haftung der Zurichtung
Finish adhesion - dry

gemäß / according to
DIN EN ISO 11644

> = 2,5 (N/cm)

Ausdehnung & Stärke der Oberfläche
Distention and strength of grain

gemäß / according to
DIN EN ISO 3379

> = 7 (mm)

Zugkraft
Tensile strength

gemäß / according to
DIN EN ISO 3376

> = 10 (N/mm²)

Weiterreißfestigkeit
Tear strength - Single edge tear

gemäß / according to
DIN EN ISO 3377-2

> = 35 (N)

Hochwertiges chromgegerbtes Rindsnappa, vollnarbig und gemillt, sehr weicher Griff und glatte Oberfläche mit angenehmem Hautgefühl; perfekt geeignet für die Verwendung für Täschnerie, Bekleidung und Modeartikel; Rohware europäischer Herkunft, gegerbt in Italien; Stärke: 1,1 - 1,3 mm; Durchschnittliche Größe einer halben Haut: 1,9 - 2,3 m²; 90 Farben;

Premium chrome tanned full grain bovine leather, milled, very soft and smooth surface; perfect for use in shoes, clothing and fashion articles; hide originating from Europe, tanned in Italy; thickness: 1.1 - 1.3 mm; average size of a half hide: 1.9 - 2.3 m²; 90 colors;